



Cartayna Files for GSXPro – Drzewiecki Design Pack – v1.2

Changelog

- KEWR updated to v1.10
- KEWR “all stands available” option added.
- KDCA updated to v1.40
- UUEE v1.40 added
- Some minor fixes.

ICAO Airport	Developer	Version
EPBY	Drzewiecki Design	1.00
EPKK	Drzewiecki Design	1.40
EPLB	Drzewiecki Design	1.10
EPMO	Drzewiecki Design	1.20
EPRZ	Drzewiecki Design	1.00
EPSY	Drzewiecki Design	1.00
EPZG	Drzewiecki Design	1.10
KDCA	Drzewiecki Design	1.30
KEWR	Drzewiecki Design	1.10
KMDW	Drzewiecki Design	1.00
RJAA	Drzewiecki Design	1.20
UUEE	Drzewiecki Design	1.40
GSX configs for all Drzewiecki Design airports released until 2024 for free update		

Take a look on your Cartayna Files installation folder



Cartayna Files for FSDT-GSX Pro					EPBY Drzewiecki Design v1.00 for MSFS2020				
Small stands									
Medium stands									
1	2	2A	3	4	26	27	28	29	
Heavy stands									
Cargo stands									

- ✓ We strongly recommend repositioning the aircraft on the stand at startup, using the GSX menu (reposition aircraft option), to achieve a correct fit. All positions except general aviation have been adjusted.
- ✓ Remember to disable the default scenario in case you have third-party scenarios installed to avoid conflict.
- ✓ In some scenarios there are fixed (BGL) jetways that are obviously unable to move. Those are scenery limitations, not errors of the Cartayna file. On such cases where jetways are not operative (such as BGL) AND there is a near door to disembark by foot, the disembarkation option by defect chosen by Cartayna Files is set to be by foot (no jetway).
- ✓ Stands classified as 'Cargo' have the passenger bus option deactivated and the loading belts are set to 'cargo'.
- ✓ VDGS or Marshaller are added to all stands that can accept it, unless they already exists in original scenery.
- ✓ All pushbacks are referenced to current charts, showing nose facing and taxiway where it stops.
- ✓ Multiple, complex and long pushbacks available depending on the chosen stand.
- ✓ Pushbacks longer than standard, or more complex than usual, are marked as LONG in the GSX menu.
- ✓ Sometimes Left or Right pushback is not available, thus only one pushback is offered. (As in real life).
- ✓ Thanks for the purchase of this file which helps us in the long hours of development of our products. You're helping for future Cartayna Files packs to be released.





Cartayna Files for FSDT-GSX Pro					EPKK Drzewiecki Design v1.40 for MSFS2020				
Small stands									
17									
Medium stands									
9	10	11	12	13	14	15	16	18	19
20	21	22	23	24					
Heavy stands									
1 (1L)	3 (3R)	4 (4L)							
Cargo stands									
6	8								

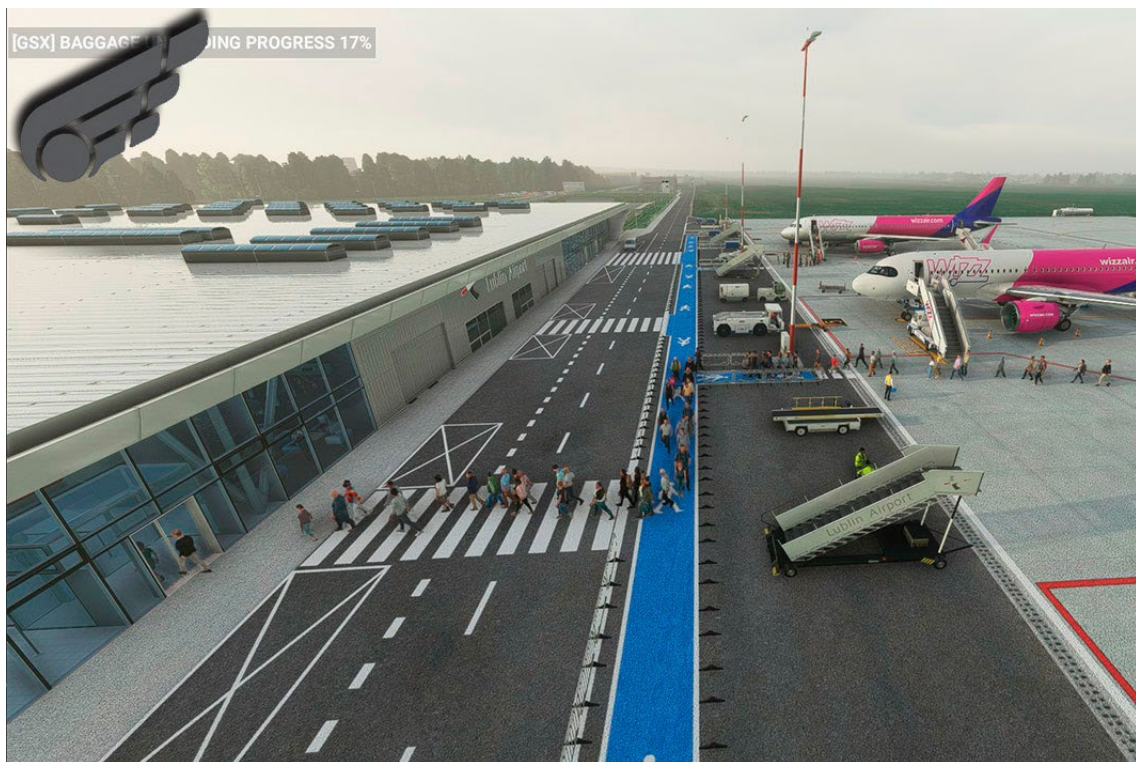
- ✓ We strongly recommend repositioning the aircraft on the stand at startup, using the GSX menu (reposition aircraft option), to achieve a correct fit. All positions except general aviation have been adjusted.
- ✓ Remember to disable the default scenario in case you have third-party scenarios installed to avoid conflict.
- ✓ In some scenarios there are fixed (BGL) jetways that are obviously unable to move. Those are scenery limitations, not errors of the Cartayna file. On such cases where jetways are not operative (such as BGL) AND there is a near door to disembark by foot, the disembarkation option by defect chosen by Cartayna Files is set to be by foot (no jetway).
- ✓ Stands classified as 'Cargo' have the passenger bus option deactivated and the loading belts are set to 'cargo'.
- ✓ VDGS or Marshaller are added to all stands that can accept it, unless they already exists in original scenery.
- ✓ All pushbacks are referenced to current charts, showing nose facing and taxiway where it stops.
- ✓ Multiple, complex and long pushbacks available depending on the chosen stand.
- ✓ Pushbacks longer than standard, or more complex than usual, are marked as LONG in the GSX menu.
- ✓ Sometimes Left or Right pushback is not available, thus only one pushback is offered. (As in real life).
- ✓ Thanks for the purchase of this file which helps us in the long hours of development of our products. You're helping for future Cartayna Files packs to be released.





Cartayna Files for FSDT-GSX Pro					EPLB Drzewiecki Design v1.10 for MSFS2020				
Small stands									
Medium stands									
1	5	7	9						
Heavy stands									
10									
Cargo stands									

- ✓ We strongly recommend repositioning the aircraft on the stand at startup, using the GSX menu (reposition aircraft option), to achieve a correct fit. All positions except general aviation have been adjusted.
- ✓ Remember to disable the default scenario in case you have third-party scenarios installed to avoid conflict.
- ✓ In some scenarios there are fixed (BGL) jetways that are obviously unable to move. Those are scenery limitations, not errors of the Cartayna file. On such cases where jetways are not operative (such as BGL) AND there is a near door to disembark by foot, the disembarkation option by defect chosen by Cartayna Files is set to be by foot (no jetway).
- ✓ Stands classified as 'Cargo' have the passenger bus option deactivated and the loading belts are set to 'cargo'.
- ✓ VDGS or Marshaller are added to all stands that can accept it, unless they already exists in original scenery.
- ✓ All pushbacks are referenced to current charts, showing nose facing and taxiway where it stops.
- ✓ Multiple, complex and long pushbacks available depending on the chosen stand.
- ✓ Pushbacks longer than standard, or more complex than usual, are marked as LONG in the GSX menu.
- ✓ Sometimes Left or Right pushback is not available, thus only one pushback is offered. (As in real life).
- ✓ Thanks for the purchase of this file which helps us in the long hours of development of our products. You're helping for future Cartayna Files packs to be released.





Cartayna Files for FSDT-GSX Pro					EPMO Drzewiecki Design v1.20 for MSFS2020				
Small stands									
Medium stands									
1	2	3	5	6	7	8	10	11	12
13									
Heavy stands									
Cargo stands									

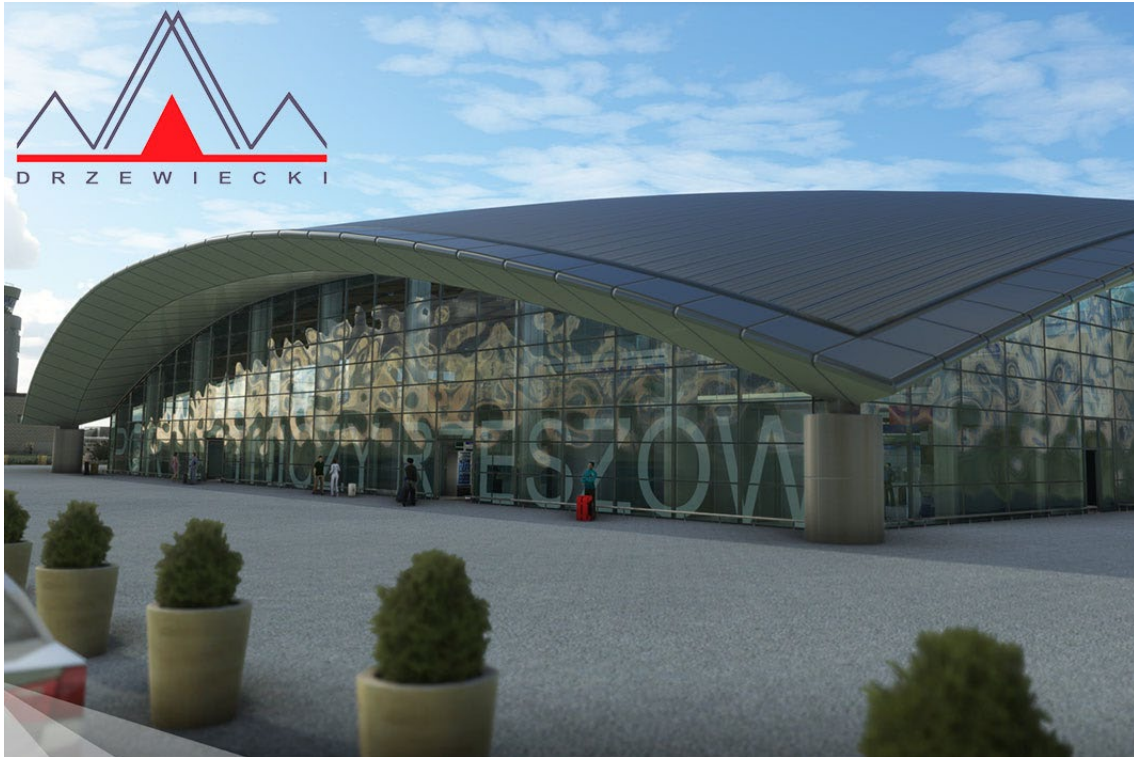
- ✓ We strongly recommend repositioning the aircraft on the stand at startup, using the GSX menu (reposition aircraft option), to achieve a correct fit. All positions except general aviation have been adjusted.
- ✓ Remember to disable the default scenario in case you have third-party scenarios installed to avoid conflict.
- ✓ In some scenarios there are fixed (BGL) jetways that are obviously unable to move. Those are scenery limitations, not errors of the Cartayna file. On such cases where jetways are not operative (such as BGL) AND there is a near door to disembark by foot, the disembarkation option by defect chosen by Cartayna Files is set to be by foot (no jetway).
- ✓ Stands classified as 'Cargo' have the passenger bus option deactivated and the loading belts are set to 'cargo'.
- ✓ VDGS or Marshaller are added to all stands that can accept it, unless they already exists in original scenery.
- ✓ All pushbacks are referenced to current charts, showing nose facing and taxiway where it stops.
- ✓ Multiple, complex and long pushbacks available depending on the chosen stand.
- ✓ Pushbacks longer than standard, or more complex than usual, are marked as LONG in the GSX menu.
- ✓ Sometimes Left or Right pushback is not available, thus only one pushback is offered. (As in real life).
- ✓ Thanks for the purchase of this file which helps us in the long hours of development of our products. You're helping for future Cartayna Files packs to be released.





Cartayna Files for FSDT-GSX Pro					EPRZ Drzewiecki Design v1.00 for MSFS2020				
Small stands									
Medium stands									
1	2	3	21	24	25				
Heavy stands									
7	23								
Cargo stands									
12	14								

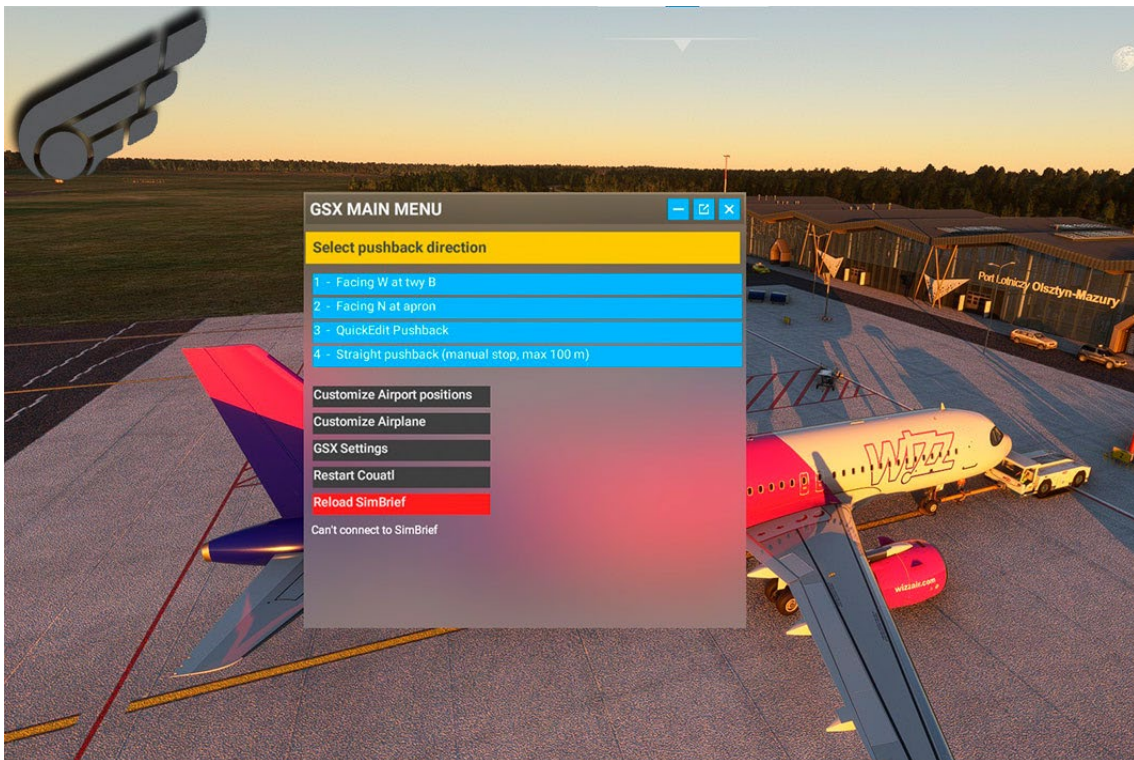
- ✓ **No passenger bus and baggage loaders at stands 21-25 (hangars).**
- ✓ We strongly recommend repositioning the aircraft on the stand at startup, using the GSX menu (reposition aircraft option), to achieve a correct fit. All positions except general aviation have been adjusted.
- ✓ Remember to disable the default scenario in case you have third-party scenarios installed to avoid conflict.
- ✓ In some scenarios there are fixed (BGL) jetways that are obviously unable to move. Those are scenery limitations, not errors of the Cartayna file. On such cases where jetways are not operative (such as BGL) AND there is a near door to disembark by foot, the disembarkation option by defect chosen by Cartayna Files is set to be by foot (no jetway).
- ✓ Stands classified as 'Cargo' have the passenger bus option deactivated and the loading belts are set to 'cargo'.
- ✓ VDGS or Marshaller are added to all stands that can accept it, unless they already exists in original scenery.
- ✓ All pushbacks are referenced to current charts, showing nose facing and taxiway where it stops.
- ✓ Multiple, complex and long pushbacks available depending on the chosen stand.
- ✓ Pushbacks longer than standard, or more complex than usual, are marked as LONG in the GSX menu.
- ✓ Sometimes Left or Right pushback is not available, thus only one pushback is offered. (As in real life).
- ✓ Thanks for the purchase of this file which helps us in the long hours of development of our products. You're helping for future Cartayna Files packs to be released.





Cartayna Files for FSDT-GSX Pro					EPSY Drzewiecki Design v1.00 for MSFS2020				
Small stands									
Medium stands									
1	2	3	4						
Heavy stands									
Cargo stands									

- ✓ **Double pushback option to allow incoming traffics to enter the apron.**
- ✓ We strongly recommend repositioning the aircraft on the stand at startup, using the GSX menu (reposition aircraft option), to achieve a correct fit. All positions except general aviation have been adjusted.
- ✓ Remember to disable the default scenario in case you have third-party scenarios installed to avoid conflict.
- ✓ In some scenarios there are fixed (BGL) jetways that are obviously unable to move. Those are scenery limitations, not errors of the Cartayna file. On such cases where jetways are not operative (such as BGL) AND there is a near door to disembark by foot, the disembarkation option by defect chosen by Cartayna Files is set to be by foot (no jetway).
- ✓ Stands classified as 'Cargo' have the passenger bus option deactivated and the loading belts are set to 'cargo'.
- ✓ VDGS or Marshaller are added to all stands that can accept it, unless they already exists in original scenery.
- ✓ All pushbacks are referenced to current charts, showing nose facing and taxiway where it stops.
- ✓ Multiple, complex and long pushbacks available depending on the chosen stand.
- ✓ Pushbacks longer than standard, or more complex than usual, are marked as LONG in the GSX menu.
- ✓ Sometimes Left or Right pushback is not available, thus only one pushback is offered. (As in real life).
- ✓ Thanks for the purchase of this file which helps us in the long hours of development of our products. You're helping for future Cartayna Files packs to be released.





Cartayna Files for FSDT-GSX Pro					EPZG Drzewiecki Design v1.10 for MSFS2020				
Small stands									
1	2	3	4	5	6	7	8	9	
Medium stands									
Heavy stands									
Cargo stands									

- ✓ We strongly recommend repositioning the aircraft on the stand at startup, using the GSX menu (reposition aircraft option), to achieve a correct fit. All positions except general aviation have been adjusted.
- ✓ Remember to disable the default scenario in case you have third-party scenarios installed to avoid conflict.
- ✓ In some scenarios there are fixed (BGL) jetways that are obviously unable to move. Those are scenery limitations, not errors of the Cartayna file. On such cases where jetways are not operative (such as BGL) AND there is a near door to disembark by foot, the disembarkation option by defect chosen by Cartayna Files is set to be by foot (no jetway).
- ✓ Stands classified as 'Cargo' have the passenger bus option deactivated and the loading belts are set to 'cargo'.
- ✓ VDGS or Marshaller are added to all stands that can accept it, unless they already exists in original scenery.
- ✓ All pushbacks are referenced to current charts, showing nose facing and taxiway where it stops.
- ✓ Multiple, complex and long pushbacks available depending on the chosen stand.
- ✓ Pushbacks longer than standard, or more complex than usual, are marked as LONG in the GSX menu.
- ✓ Sometimes Left or Right pushback is not available, thus only one pushback is offered. (As in real life).
- ✓ Thanks for the purchase of this file which helps us in the long hours of development of our products. You're helping for future Cartayna Files packs to be released.





Cartayna Files for FSDT-GSX Pro					KDCA Drzewiecki Design v1.40 for MSFS2020				
Small stands									
A1	A2	A3	A4	A5	A7	A9	A10	B10	B14
B15	B17	B22	B60	C23	C24	C25	C26	C28	C29
C30	C31	C32	C33	D35	D39	D40	D41	D42	D44
E46	E47	E48	E51	E52	E53	E54	E55	E56	E57
E59	P1	P2	P3	P4	P10B	P106	107	P108	
Medium stands									
B11	B16	B18	B21	D38	D43	S1	S2	S3	S4
Heavy stands									
Cargo stands									

- ✓ We strongly recommend repositioning the aircraft on the stand at startup, using the GSX menu (reposition aircraft option), to achieve a correct fit. All positions except general aviation have been adjusted.
- ✓ Remember to disable the default scenario in case you have third-party scenarios installed to avoid conflict.
- ✓ In some scenarios there are fixed (BGL) jetways that are obviously unable to move. Those are scenery limitations, not errors of the Cartayna file. On such cases where jetways are not operative (such as BGL) AND there is a near door to disembark by foot, the disembarkation option by defect chosen by Cartayna Files is set to be by foot (no jetway).
- ✓ Stands classified as 'Cargo' have the passenger bus option deactivated and the loading belts are set to 'cargo'.
- ✓ VDGS or Marshaller are added to all stands that can accept it, unless they already exists in original scenery.
- ✓ All pushbacks are referenced to current charts, showing nose facing and taxiway where it stops.
- ✓ Multiple, complex and long pushbacks available depending on the chosen stand.
- ✓ Pushbacks longer than standard, or more complex than usual, are marked as LONG in the GSX menu.
- ✓ Sometimes Left or Right pushback is not available, thus only one pushback is offered. (As in real life).
- ✓ Thanks for the purchase of this file which helps us in the long hours of development of our products. You're helping for future Cartayna Files packs to be released.

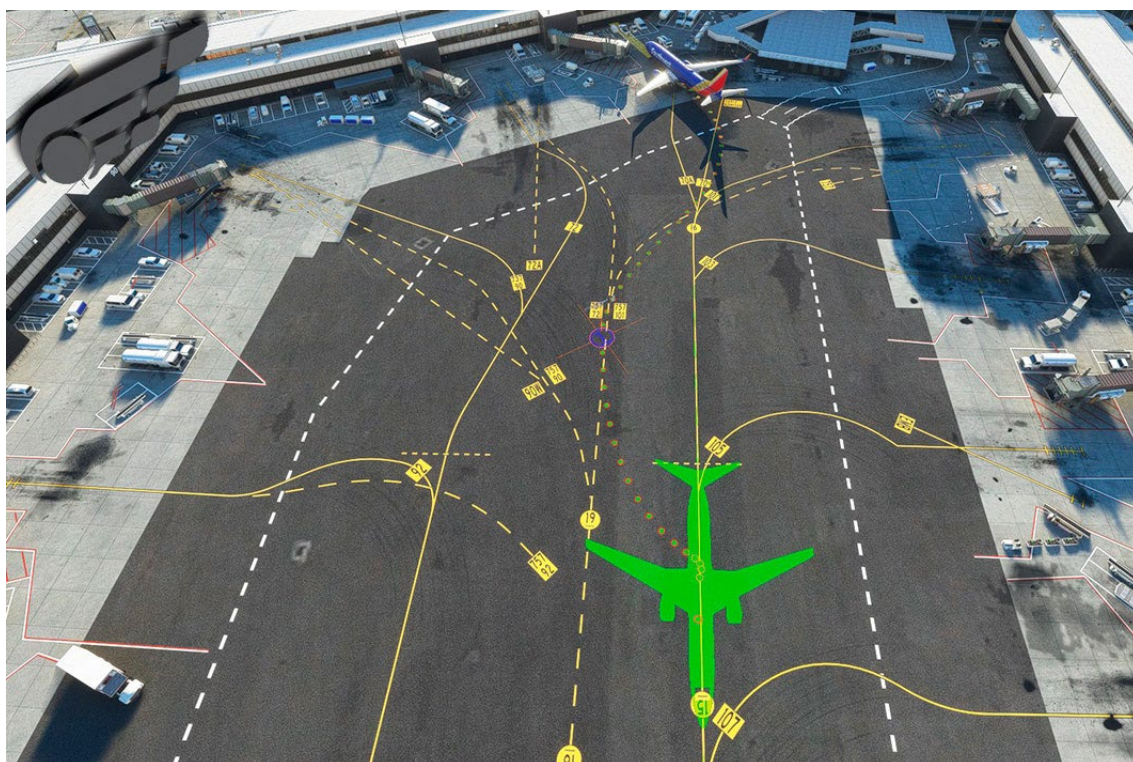




Cartayna Files for FSDT-GSX Pro					KEWR Drzewiecki Design v1.10 for MSFS2020				
Small stands									
A8	B40	B41	B41B	C71T	C71V	C71W	C71X	C71Y	C72
C84	C85	C86	C87	C99	C101	C103	C105	C107	C109
C111	C114	C115	C127	C130	C131	C135			
Medium stands									
A1	A2	A3	A4	A5	A6	A7	A9	A10	A11
A12	A14	A15	A16	A17	A19	A20	A21	A22	A23
A24	A25	A26	A27	A28	A29	A30	A31	A32	A33
A34	B45A	B45B	B46B	B47	B51	B52	B53	B54	B55
B56	B57	B60	B61	B65	B66	B67	C70	C71	C73
C74	C75	C80	C81	C82	C83	C90	C92	C94	C95
C96	C97	C104	C108	C110	C112	C113	C120	C123	C126
C128	C132	C133	C134	C136	C137	NE2	NE4	P36	P37
P38									
Heavy stands									
A8A	A18A	A28A	B42	B44	B46A	B62	B63	B68	C98
C102	C121	C125A	C138	P39					
Cargo stands									
P2	P3	P5	P6	P8	P10	P11	P12	P31	P33
P35	C1	C2	C3	C4	C6	C8	C9	C10	C12

- ✓ Remember to disable FDST jetways using FSDT Installer-Config Tool to avoid isolated jetways in old terminals "A".
- ✓ Shall you want to have all stands available in KEWR, Cartayna Files has an option on the Drzewiecki Design KEWR configurator, where you can choose our All Gates available. Our configuration is already prepared to run for you all those new available gates.
- ✓ We strongly recommend repositioning the aircraft on the stand at startup, using the GSX menu (reposition aircraft option), to achieve a correct fit. All positions except general aviation have been adjusted.
- ✓ Remember to disable the default scenario in case you have third-party scenarios installed to avoid conflict.
- ✓ In some scenarios there are fixed (BGL) jetways that are obviously unable to move. Those are scenery limitations, not errors of the Cartayna file. On such cases where jetways are not operative (such as BGL) AND there is a near door to disembark by foot, the disembarkation option by defect chosen by Cartayna Files is set to be by foot (no jetway).
- ✓ Stands classified as 'Cargo' have the passenger bus option deactivated and the loading belts are set to 'cargo'.
- ✓ VDGS or Marshaller are added to all stands that can accept it, unless they already exists in original scenery.
- ✓ All pushbacks are referenced to current charts, showing nose facing and taxiway where it stops.
- ✓ Multiple, complex and long pushbacks available depending on the chosen stand.
- ✓ Pushbacks longer than standard, or more complex than usual, are marked as LONG in the GSX menu.
- ✓ Sometimes Left or Right pushback is not available, thus only one pushback is offered. (As in real life).

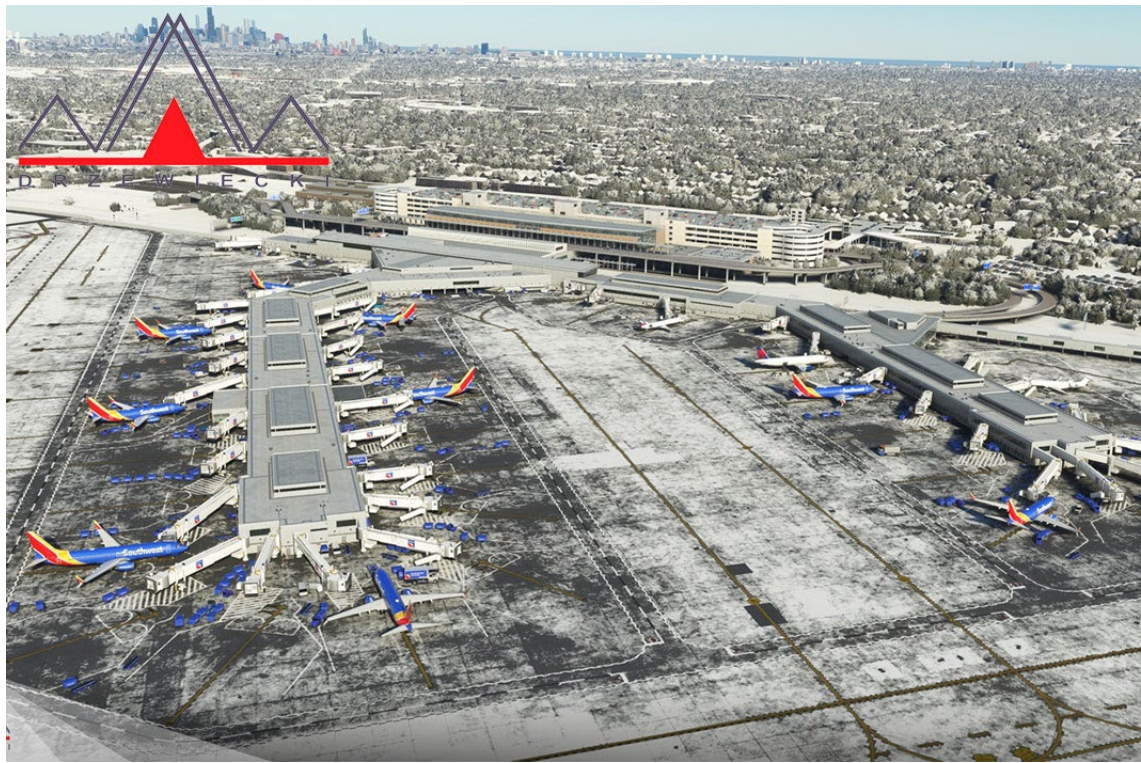
- ✓ Thanks for the purchase of this file which helps us in the long hours of development of our products. You're helping for future Cartayna Files packs to be released.





Cartayna Files for FSDT-GSX Pro					KMDW Drzewiecki Design v1.00 for MSFS2020				
Small stands									
B5	B8	B17							
Medium stands									
A1	A2	A5	A10	A11	1A4	A15	A18	A19	A41
A42	B1	B3	B9	B11	B12	B14	B18	B19	B20
B22	B23	B24	B25	C1	C2	C3			
Heavy stands									
Cargo stands									

- ✓ We strongly recommend repositioning the aircraft on the stand at startup, using the GSX menu (reposition aircraft option), to achieve a correct fit. All positions except general aviation have been adjusted.
- ✓ Remember to disable the default scenario in case you have third-party scenarios installed to avoid conflict.
- ✓ In some scenarios there are fixed (BGL) jetways that are obviously unable to move. Those are scenery limitations, not errors of the Cartayna file. On such cases where jetways are not operative (such as BGL) AND there is a near door to disembark by foot, the disembarkation option by defect chosen by Cartayna Files is set to be by foot (no jetway).
- ✓ Stands classified as 'Cargo' have the passenger bus option deactivated and the loading belts are set to 'cargo'.
- ✓ VDGS or Marshaller are added to all stands that can accept it, unless they already exists in original scenery.
- ✓ All pushbacks are referenced to current charts, showing nose facing and taxiway where it stops.
- ✓ Multiple, complex and long pushbacks available depending on the chosen stand.
- ✓ Pushbacks longer than standard, or more complex than usual, are marked as LONG in the GSX menu.
- ✓ Sometimes Left or Right pushback is not available, thus only one pushback is offered. (As in real life).
- ✓ Thanks for the purchase of this file which helps us in the long hours of development of our products. You're helping for future Cartayna Files packs to be released.





Cartayna Files for FSDT-GSX Pro					RJAA Drzewiecki Design v1.20 for MSFS2020				
Small stands									
600C	600D	600E	600F	600G	600J	600K	600L	600N	600O
600P	600R	600S	600T	600U	610	611	612	614	
Medium stands									
12	67L	67R	100B	100C	100F	101	150	151	152
153	155	162	164	174	175	181	182	183	191L
192L	192R	402L	402R	403L	403R	413	423L	423R	424L
429	430	434R	444L	446L	446R	448L	448R		
Heavy stands									
11	14	16	18	21	22	23	25	31	32
33	34	35	38	41	42	43	44	46	47
51	52	54	55	57A	57B	58A	62	63	64
68	72	73	75	81	82	83	85	86	88
91	93	94	95	97	98	104	401	410	411
421	422	425	427	428	441	442	443	445	449
450	501	502	504	505	508	509	510	511	703
705	707	708							
Extra stands									
26	66	96							
Cargo stands									
202	203	204	205	206	207	208	210	211	221
222	223	224	225	232	801	802	803	804	806
807	808	902	904	905					

- ✓ There is an error on parking 413, it is actually 412.
- ✓ There is an error on parking 434R, it is actually 424R.
- ✓ There is an error on parking 610, it is actually 613.
- ✓ There is an error on parking 600O, it is actually 600Q.
- ✓ Real life VDGS.
- ✓ Ground services disabled at maintenance area (501-511)
- ✓ We strongly recommend repositioning the aircraft on the stand at startup, using the GSX menu (reposition aircraft option), to achieve a correct fit. All positions except general aviation have been adjusted.
- ✓ Remember to disable the default scenario in case you have third-party scenarios installed to avoid conflict.
- ✓ In some scenarios there are fixed (BGL) jetways that are obviously unable to move. Those are scenery limitations, not errors of the Cartayna file. On such cases where jetways are not operative (such as BGL) AND there is a near door to disembark by foot, the disembarkation option by defect chosen by Cartayna Files is set to be by foot (no jetway).
- ✓ Stands classified as 'Cargo' have the passenger bus option deactivated and the loading belts are set to 'cargo'.
- ✓ VDGS or Marshaller are added to all stands that can accept it, unless they already exists in original scenery.
- ✓ All pushbacks are referenced to current charts, showing nose facing and taxiway where it stops.

- ✓ Multiple, complex and long pushbacks available depending on the chosen stand.
- ✓ Pushbacks longer than standard, or more complex than usual, are marked as LONG in the GSX menu.
- ✓ Sometimes Left or Right pushback is not available, thus only one pushback is offered. (As in real life).
- ✓ Thanks for the purchase of this file which helps us in the long hours of development of our products. You're helping for future Cartayna Files packs to be released.





Cartayna Files for FSDT-GSX Pro					UUEE Drzewiecki Design v1.40 for MSFS2020				
Small stands									
85	B122	B177	C89	C151	C152	C153	C154		
Medium stands									
163	178	179	203	204	205	207	209	A106	A110
A111	B86	B87	B88	B89	B100	B101	B106	B107	B110
B118	B119	B120	B121	B125	B126	B128	B129	B131	B168
B171	B173	B174	B180	B184	B185	B186	B189	B191	B192
B194	B196	B198	C133	C138	C141	C142	C144	C145	C146
C147	C148	C149	C150	D8	D9	D11	D12	D14	D16
D17	D18	D19	D20	D25	D27	D28	D30	D31	E34
E35	E36	E39	E40	E41	F48	F49	F58	F59	F62
F63	F64	F66	F68	F69	F70	F72			
Heavy stands									
B115 (B115A)		B162	B181	B190	C134 (C134A)		C139	D3	D23
E37 (E37A)		F46	F50	F52	F53 (F53A)		F56	F67	
Cargo stands									
74	75	76	79	80	81	B94	B96		

- ✓ We strongly recommend repositioning the aircraft on the stand at startup, using the GSX menu (reposition aircraft option), to achieve a correct fit. All positions except general aviation have been adjusted.
- ✓ Remember to disable the default scenario in case you have third-party scenarios installed to avoid conflict.
- ✓ In some scenarios there are fixed (BGL) jetways that are obviously unable to move. Those are scenery limitations, not errors of the Cartayna file. On such cases where jetways are not operative (such as BGL) AND there is a near door to disembark by foot, the disembarkation option by defect chosen by Cartayna Files is set to be by foot (no jetway).
- ✓ Stands classified as 'Cargo' have the passenger bus option deactivated and the loading belts are set to 'cargo'.
- ✓ VDGS or Marshaller are added to all stands that can accept it, unless they already exists in original scenery.
- ✓ All pushbacks are referenced to current charts, showing nose facing and taxiway where it stops.
- ✓ Multiple, complex and long pushbacks available depending on the chosen stand.
- ✓ Pushbacks longer than standard, or more complex than usual, are marked as LONG in the GSX menu.
- ✓ Sometimes Left or Right pushback is not available, thus only one pushback is offered. (As in real life).
- ✓ Thanks for the purchase of this file which helps us in the long hours of development of our products. You're helping for future Cartayna Files packs to be released.

